

# How You Get 6 Pickup Tones Using Our T2 Pickup Switch Upgrade Product

**T2-SWITCH LEGEND** (switch information on this page is for Right Hand use)

**Pickup Phase Switches:**

**SW1, SW3** are on-off-on *Phase* switches

Each switch controls one pickup coil in normal phase (Down) or reverse phase (Up) The Center position of the switch is Off.

**SW1** Controls the Bridge Pickup coil

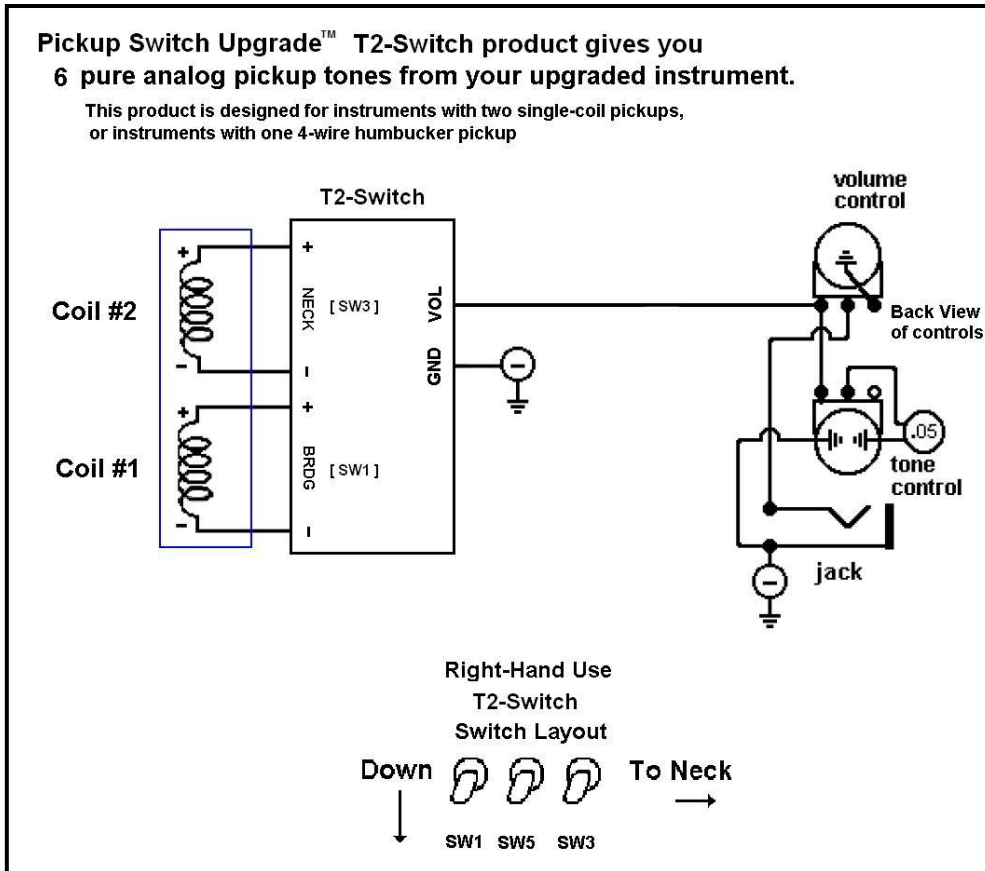
**SW3** Controls the Neck Pickup coil

**Pickup Connection Switches:**

**SW5** is an on-on *Connection* switch

When **SW5** is Down (coils are in parallel)  
When **SW5** is Up (puts coils 1 & 2 in series)

ALL pickup coils that are in series **MUST** be on to produce sound.



**Switching Proof Table (for right hand use)** to get 6 Pickup Tones from two single-coil pickups, or one 4-wire humbucker pickup with our Pickup Tone Multiplier T2-Board.

(note that 2-wire humbuckers can be used where single-coil pickups are specified)

Switch legend for **SW1** and **SW3**: D = Down, U = Up, no symbol is Off (center position)

Switch legend for **SW5**: U = Up (put coils in series), no symbol is Down

(also see documents #3, #5, #6 and #A in our Document Library at [www.AweSome-Guitars.com](http://www.AweSome-Guitars.com))

**SWITCH COMBINATIONS USED BY T2-BOARD**

##	SW3	SW5	SW1
1.			D
2.	D		
3.	D		D
4.	U		D
5.	D	U	D
6.	U	U	D

**Your Description of the pickup sound**

1. \_\_\_\_\_
2. \_\_\_\_\_
3. \_\_\_\_\_
4. \_\_\_\_\_
5. \_\_\_\_\_
6. \_\_\_\_\_

# How You Get 6 Pickup Tones Using Our T2 Pickup Switch Upgrade Product

## T2-SWITCH LEGEND (switch information on this page is for Left Hand use)

### Pickup Phase Switches:

**SW1, SW3** are on-off-on Phase switches

Each switch controls one pickup coil in normal phase (Down) or reverse phase (Up)  
The Center position of the switch is Off.

**SW1** Controls the Bridge Pickup coil

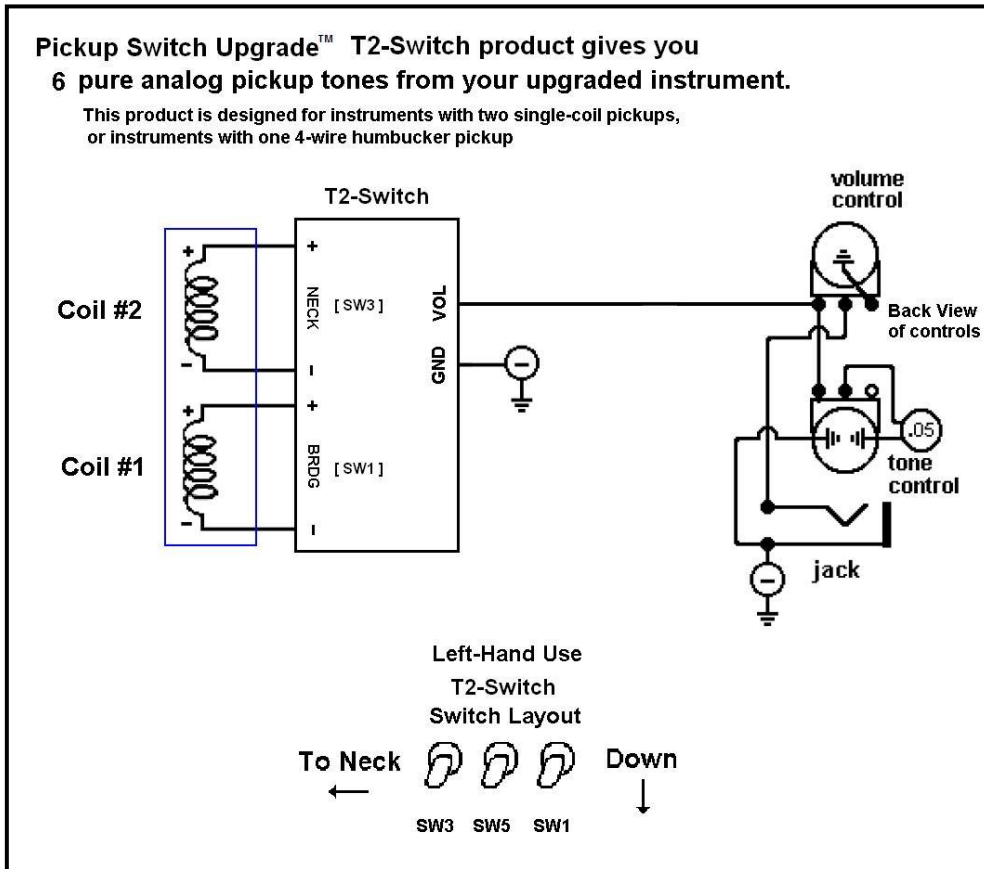
**SW3** Controls the Neck Pickup coil

### Pickup Connection Switches:

**SW5** is an on-on Connection switch

When **SW5** is Up (coils are in parallel)  
When **SW5** is Down (put coils 1 & 2 in series)

ALL pickup coils that are in series **MUST** be on to produce sound.



## Switching Proof Table (for left hand use) to get 6 Pickup Tones from two single-coil pickups, or one 4-wire humbucker pickup with our Pickup Tone Multiplier T2-Board.

(note that 2-wire humbuckers can be used where single-coil pickups are specified)

Switch legend for **SW1** and **SW3**: D = Down, U = Up, no symbol is Off (center position)

Switch legend for **SW5**: D = Down (puts coils in series), no symbol is Up

(also see documents #3, #5, #6 and #A in our Document Library at [www.AweSome-Guitars.com](http://www.AweSome-Guitars.com))

### SWITCH COMBINATIONS USED BY T2-SWITCH

##	<u>SW1</u>	<u>SW5</u>	<u>SW3</u>
1.	D		
2.			D
3.	D		D
4.	D		U
5.	D	D	D
6.	D	D	U

### Your Description of the pickup sound

1. \_\_\_\_\_
2. \_\_\_\_\_
3. \_\_\_\_\_
4. \_\_\_\_\_
5. \_\_\_\_\_
6. \_\_\_\_\_